



ESGWEISE Sustainability Advisory & Auditing

Delivering Expertise. Enabling Action. Sustaining Outcomes.

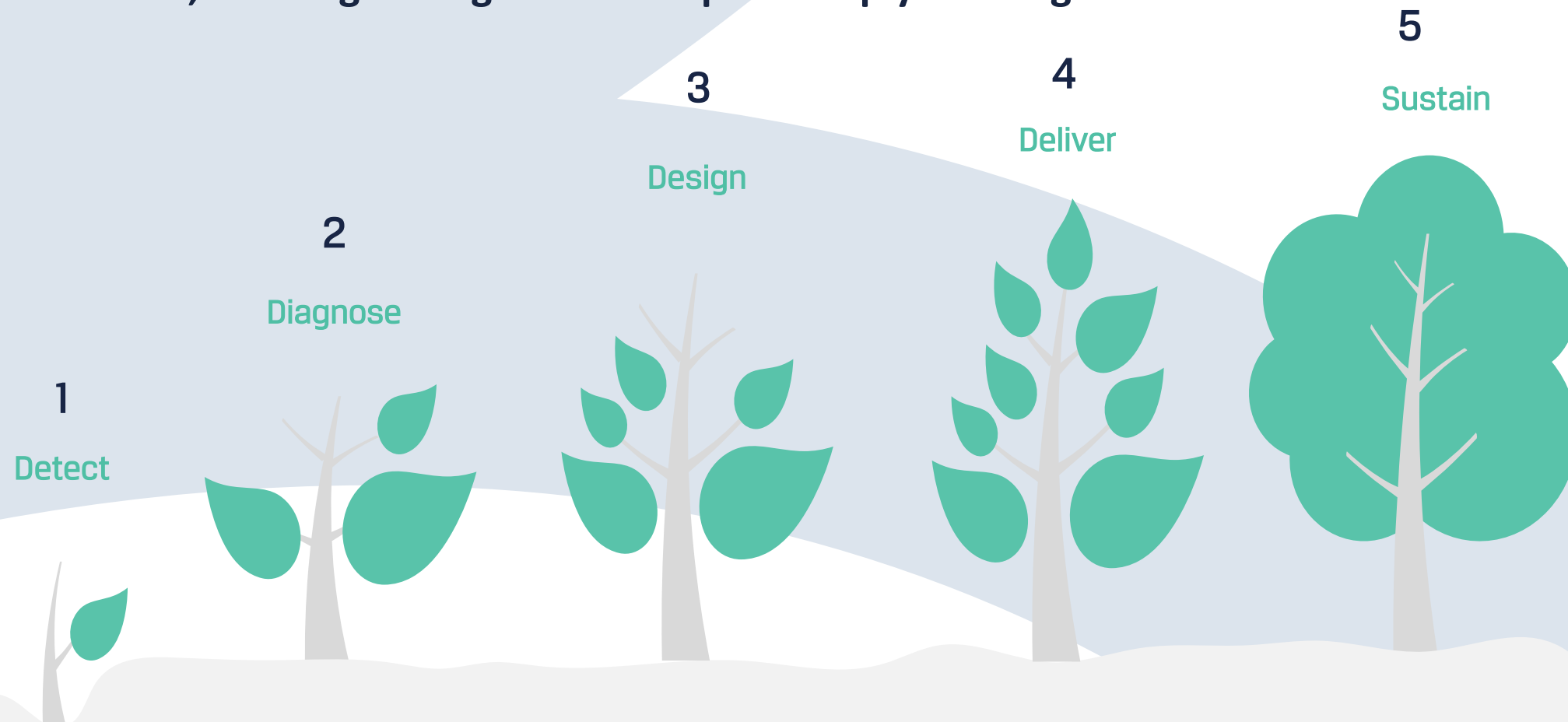
contact@esgweise.com



About ESG WEISE

ESG WEISE IS A SPECIALIZED CONSULTING FIRM COMMITTED TO TRANSFORMING ORGANIZATIONAL STRATEGIES WITH INNOVATIVE EXCELLENCE AND SUSTAINABLE IMPACT

ESGWEISE is your strategic partner for tailored solutions. Our expert team delivers impact through innovative, quality-driven processes. With deep expertise in Sustainability, finance, strategy, and more, we provide personalized solutions for government, private, and non-profit sectors. Through innovation and rigorous analysis, we create practical solutions tailored to your needs, building lasting relationships to help you navigate uncertainties and succeed.



Why Sustainability and Environment?

ESG Mandated by Exchanges and Central Banks



- GRI, TCFD, UNSDG, SASB, IFRS S1 & S2, ADX, MSX, DFM, Tadawul , Voluntary in Kuwait and Qatar

ESG Ratings becoming Mainstream line Credit Ratings



- S&P, MSCI, FTSE Brussels, Sustainalytics, Double Materiality, Environmental Policy , Climate Policy

ESG Assessments, ESG & GHG Audit in Sectors and Industries



- ESG Audit , GHG Audit, ECOVADIS, ASI, Better Cotton Initiative, Responsible Steel, Supplier Score Card

Mandatory Reporting of GHG Emission



- GHG Inventory, CBAM, Scope 1, Scope 2, Scope 3, Finance Emissions, Insured Emissions

Climate Risk Assessment



- PD, LGD, Physical Risk, Transition Risk, Scenario analysis, Credit Risks

Net Zero Targets and NDCs



- Net Zero 2050, SBTi, Pacta, Carbon Pricing, Article 6.4, ITMOs, Article 6.4, Carbon Advisory



Tailored ESG Support for Diverse Maturity Levels

1. Beginner

ESG Reports
GHG Emissions
Materiality Assessments
ESIA Reports
ESG Governance and Transmission Channels

Policy and Procedures

Capacity Building



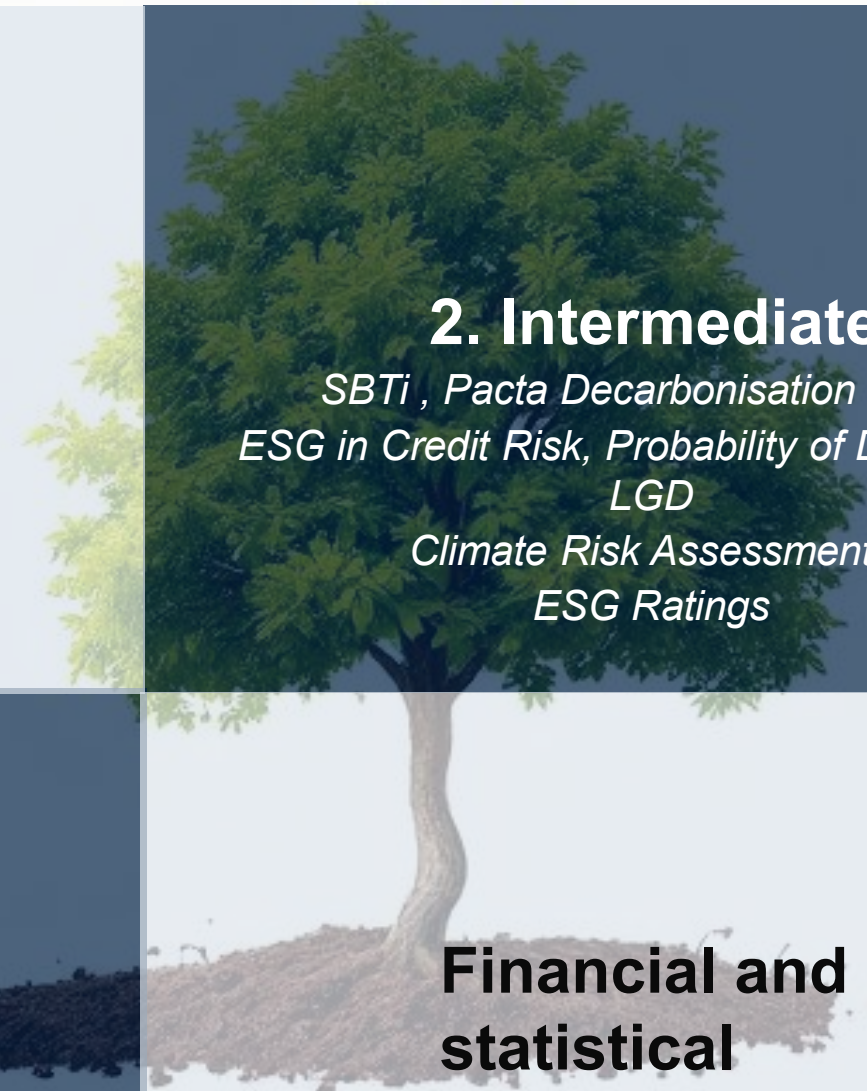
3. Advance

Advance Decarbonization Models
ESG in ERM, BCP
GHG Audits
Carbon Advisory
Greenwashing

2. Intermediate

SBTi, Pacta Decarbonisation Target
ESG in Credit Risk, Probability of Default and LGD
Climate Risk Assessments
ESG Ratings

Financial and statistical Modelling





Our Services



Training

Leadership

Sustainability

Managerial

Technical



Sustainability Advisory

ESG Reports

GHG Reports

Environmental Studies

ISO Studies



Audits

ESG Audits

GHG Audits

HSE Audits

SLL Verification



Our Approach



ACTIVITIES

- | | | | |
|--|---|---|---|
| <ul style="list-style-type: none">• Case based pre-project diagnostics• Project requirements validation and understanding expectations• Work plan detailing with delivery milestones and stakeholder alignment | <ul style="list-style-type: none">• Problem diagnostics• Process and Method study• Organisational capability analysis• Framework designing• Global benchmarking• Hypothesis building | <ul style="list-style-type: none">• Hypothesis testing• Customised approach to structuring the solution• Stakeholder alignment on the project solution and finalisation of the same | <ul style="list-style-type: none">• Implementation plan• Knowledge transfer and hand-holding |
|--|---|---|---|

We are recognized for our ingenuity and consistent delivery as we consider the uniqueness of each problem and tailor solutions to meet client-specific requirements. **We persevere to align our advisory with clients' goals at every step and our deep engagement with the clients enables smoother execution and impact.**



Collaboration and cohesiveness: We lay stress on building strong relationships to foster mutual trust and strengthen cohesion within our team and with our clients



Continuous improvement and value creation for all stakeholders: Our quest for learning transforms into innovative and dynamic design approaches to strategy. We lay stress on substance over jargon and employ thought leadership to create value for both, our clients and team



Responsiveness: Adopting a flexible structure to problem solving allows us to quickly maneuver through situational complexities and address the clients' requirements strategically



Integrity: We emphasize client confidentiality as an ethos across all our engagements. We uphold and encourage openness, transparent knowledge exchange and unreserved advisory to ensure realistic value driven delivery of insights

We publish high-quality, visually engaging reports with dynamic info graphics to bring your sustainability journey to life

ESG Reports

- Sustainability reports
- ESIA Report
- Climate change Impact Assessment
- Climate Change Risk
- Climate Change Policy
- Biodiversity reports

Governance Reports

- PRI Report
- Equator Principal Report
- TCFD alignment Report
- CSR reports
- Gap Assessment Reports
- Materiality assessment reports

Social & Performance Reports

- Sustainable finance reports
- Health and safety reports
- Stakeholder engagement reports
- SOP and KPI Reports
- Human right reports
- UN SDGs performance reports

Organizational Reports

- Employee well-being reports
- Impact reports
- Community investment reports
- Sustainable value chain reports
- Diversity and inclusion reports
- Others

We Bring Sustainable Supply Chain Solutions to Drive Impact

ESG Risk Assessment

Identify and mitigate supply chain risks.

Strategic ESG Integration

Embed sustainability across operations.

Supplier Codes & Compliance

Align with regulations and best practices.

Evaluation & Due Diligence

Assess suppliers through structured frameworks.

Supplier ESG Scorecard

Measure and enhance supplier sustainability.

Modern Slavery Act Compliance

Ensure ethical and responsible sourcing.

We implement sustainability-driven solutions to optimize your carbon footprint, enhance ESG compliance, and drive lasting impact

Carbon Footprint Management

Measure, track, and reduce emissions

GHG Inventory & Calculation

Scope 1, 2, & 3 emissions assessment

Climate Strategies & Roadmaps

Align with SBTi climate goals

GHG Reporting & Disclosures

Compliance with GHG Protocol, ISO 14064, TCFD, CDP, IFRS S2

ESG & GHG Audits

Ensure transparency and accountability

Social Impact Measurement

Evaluate and enhance societal contributions

Diversity & Inclusion Initiatives

Foster equitable workplaces

Waste & Resource Management

Drive circular economy solutions

Green Building & Energy Efficiency

Sustainable infrastructure & energy audits

Our ESG Tools enable you in your Journey



ESGWISE

Home

Favourite

Work Folders

Energy Audit

QHSE Audit

Goverance

BRSR Comprehensive

Initiatives

GHG Emission Calculations

BRSR

ESG Reporting

Welcome Sumit Agarwal

Recent

Essential Indicators

Essential Indicators

PRINCIPLE 1

Products For Reusing,...

Essential Indicators

Work Folders

Energy Audit

QHSE Audit

Goverance

BRSR Comprehensive

Initiatives

GHG Emission Calculations

BRSR

ESG Reporting

Favourites

Survey language: English

Survey

Score

Comments

Business Score

A

B

C

D

E

E

Low level of Sustainability

Environmental Score

A

B

C

D

E

Low level of Sustainability

Social Score

A

B

C

D

E

D

Sufficient level of Sustainability

Governance Score

A

B

C

D

E

D

Sufficient level of Sustainability

Industry Score

A

B

C

D

E

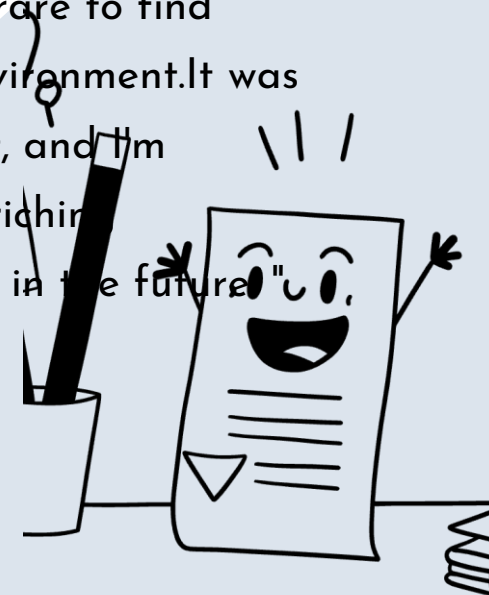


Outstanding Feedback and Appreciation



Fantastic and Insightful Session

" Hello Sumit and everyone, Thank you so much for facilitating such a fantastic and insightful training session! The depth of knowledge you shared, combined with the dynamic discussions, made it truly engaging. The variety of questions from the group showed how invested everyone was, and I completely agree, it's rare to find such a highly interactive environment. It was a pleasure to be a part of it, and I'm looking forward to more enriching conversations with everyone in the future."



Board Members and Executive Management Impressed

"I wanted to extend my heartfelt congratulations to you and the entire team for the remarkable feedback received from the Board Members and Executive Management following the recent briefings. The level of engagement, professionalism, and quality of the materials you provided clearly left a lasting impression. Congratulations once again on this well-deserved success. I look forward to seeing how you continue to build on this momentum in delivering board programs to our clients."

Gratitude for Insightful Course

"Thank you for making the course an insightful and delightful experience. grateful to have had the opportunity to learn from you Sumit."



Privileged Experience

"This was insightful and interesting. I feel privileged from attending this and consider it a highly worthwhile experience. Thank you, Mr. Sumit. "

Positive Report Feedback

" Thanks for Sharing Report with Design. It is Good. "

Why us

*At ESGWEISE, we
develop custom end-to-
end solutions powered by
proprietary technologies
and in-house expertise to
drive sustainability and
impactful results*

1 Comprehensive Coverage

End-to-end solutions targeting sustainability, climate change, ESG, and human rights domains.

2 Integrated In-House Model

Specialized technical teams united under a robust project workflow methodology.

3 Responsive Problem Solving

Flexible problem-solving for quick and effective solutions in a changing landscape

4 Industry Standards

Rigorous alignment with local and global frameworks like GRI, IFRS S1S2, PRI, TCFD, ISO 14064 and UN SDGs.

5 Proven Industry Expertise

Confidently navigate challenges with our extensive experience across diverse industries

6 Future Focused

Future-focused problem-solving where innovation meets precision for success



Commitment to Excellence: Our Framework for Project Success and Implementation



-> With a responsive and flexible problem-solving structure, we swiftly deliver effective solutions, adeptly navigating the dynamic business landscape

Adaptive Methodologies

Rapid Decision-Making

Strategic Agility

Client-Centric Agility

We cultivate collaboration through diverse mechanisms on a regular basis



Pre-alignment
Discussions



Targeted
Trainings and
Workshops



Regular
Check-ins



Communications
via Shared
Platform



Proactive
Progress
Updates and
Risk Mitigation



Dedicated
Feedback
Mechanisms

"Years of experience have sharpened our responsiveness and agility in assisting clients at every stage, from startups to established firms, across advisory, strategy to implementation"



Our forward-thinking approach ensures that your business stays ahead, embracing cutting-edge solutions for sustainable success



Our forward-thinking approach is evident in our 100% project success rate, highlighting the sustainability of our solutions.

Client
Testimonials

"A consistently fantastic experience with ESGWEISE – always a pleasure to work with!"

"Commendable effort! The team at ESGWEISE is not only reliable but also highly available."

"Impressive grasp of an unknown industry, coupled with analytical and logical strategic thinking."

"From proposal to perfected business plan, ESGWEISE exemplifies professional ethics and dedication to refining and raising funds."

Forward-Thinking Strategies

Forward-Thinking Strategies

Proactive Adaptation

Futuristic Problem-Solving

Success

People



Success

CASE STUDIES

Success

People

Talent

Talent

Reference Projects

ESG and Relevant Reports

Multiple Reports on the ESG for various sectors like manufacturing and BFSI.

Sustainable Finance Training

Multiple Trainings for the Banks, Investment companies, manufacturing etc across GCC in ESG

ESG, GHG Audit Assignment

Multiple Assurance projects for firms on ESG and GHG Emissions Scope 1- Scope 2- Scope 3 as per the GHG protocol having offices in multiple GCC locations

Board Engagements

Multiple Board and ExCO Training on various topic including sustainability, market trends etc. (BANK)

GHG Inventory, Climate Risk Assessment

Assignments related to GHG inventory calculations and Climate risk assessment as per the climatology of the country.

ESG Rating Questionnaire

Implementing an ESG Questionnaire across 40 sectors for a rating agency to implement ESG rating.

Reference Projects

Environment Policy

Supporting in developing environment and health policy for a governmental organisation and municipalities.

Sustainability Linked Loan

Sustainability Linked Loan Assurance for a Multimillion Sustainability Loan.

Supplier Assessment Scorecard

Developing a Modern Sleek Supplier assessment scorecard to assess the supply chain performance

HR – HSE – SOP and KPI Development

Supporting an Aluminium Manufacturing and Recycling Company through development of various policy and procedure aligned with the ESG Audit.

ESG Rating Support

Supporting a Listed Firm in the assessment of ESG Rating and its rating as per S&P, MSCI, FTSE Brussels.

ESG Governance – Policy-Roadmap

Supporting a NBFC in training, governance framework, policy and procedures , roadmap development to implement sustainability.

Reference Projects

Feasibility Study for Clean Fuel

Client wanted to a feasibility assessment and financial modelling for a clean fuel Business focusing biofuel.

Solar Project

Conceptualising and executing a 5 MWp Solar Project in Riyadh for Mowah Water Desalination Project.

Inbuilt Environment Benchmarking

Supporting the GAP assessment and benchmarking for the inbuilt environment benchmarking.

Decarbonization Plan

Support in the decarbonisation plan preparation, validation of the KPIs and peer benchmarking.

Decommission Plans

Creating Decommission plan, policy and estimates for an Energy and Desalination project.



Esg Reports



Sharjah Insurance Company

2024 SUSTAINABILITY REPORT

Illustrative

CONTENTS

- Leadership & Corporate Overview
- Sustainability & Business Performance
- Environmental, Social, and Governance (ESG) Performance
- Appendix

Message from CEO

I am honoured to present Sharjah Insurance's Sustainability Report for 2024, showcasing our unwavering commitment to responsible and sustainable business practices. Over the past year, we have made significant strides in integrating Environmental, Social, and Governance (ESG) principles into our core operations, ensuring that sustainability remains at the heart of our corporate strategy. Our efforts align with UAE Vision 2050 and global sustainability frameworks, reinforcing our dedication to long-term value creation for our clients, shareholders, and the communities we serve. Throughout 2024, we have prioritized reducing our carbon footprint, enhancing operational efficiency, and strengthening our governance structure. Our focus on Environmental, Social, and Governance (ESG) principles reflects our dedication to fostering financial inclusion while promoting digitalization, an inclusive economy, and enhancing customer experience and data security. I extend my sincere gratitude to our employees, clients, and stakeholders for their ongoing support in shaping a more sustainable and resilient future for Sharjah Insurance and the broader UAE community.



Environment Reports

Contractual Obligation Assessment of Decommissioning

January 20, 2024

Prepared by : premier brains

Illustrative

Index

- Contents
- 1. Introduction
- 1.1 Purpose
- 1.2 Scope
- 1.3 Guiding Principles
- 1.4 Objectives
- 1.5 Applicability
- 2. Legal and Regulatory Framework
- 2.1 Overview
- 2.2 Applicable Omani Laws and Regulations
- 2.3 International Standards
- 2.4 Contractual Obligations
- 3. Governance and Responsibilities
- 3.1 Overview
- 3.2 Governance Structure
- 3.3 Key Stakeholders and Their Roles
- 3.4 Reporting and Communication
- 3.5 Responsibility Matrix
- 4. Decommissioning Process
- 4.1 Overview
- 4.2 Key Phases of Decommissioning
- 4.3 Key Deliverables
- 5. Environmental and Social Considerations
- 5.1 Overview
- 5.2 Environmental Considerations
- 5.3 Social Considerations
- 5.4 Environmental and Social Risk Management
- 5.5 Key Performance Indicators (KPIs)
- 5.6 Reporting and Transparency

SLL Assurance

Based on your selection, related sections below might become irrelevant and greyed out below.

(g) Directly attributable emissions (DirEm*)	Unit	Value
(h) Import and export of measurable heat	Unit	Value
i. Amount of net measurable heat	Unit	Value
ii. Emissions factor	Unit	Value
(i) Waste gases	Unit	Value
i. Amount of waste gas	Unit	Value
ii. Emissions factor	Unit	Value
(j) Indirect emissions from electricity consumption	Unit	Value
i. Electricity consumption	Unit	Value
ii. Emission factor of the electricity	Unit	Value
iii. Source of the emission factor	Unit	Value
(k) Electricity exported from the production process	Unit	Value
i. Amounts exported	Unit	Value
ii. Emission factor of the electricity	Unit	Value

Illustrative

Production process	Carbon price (CP) due (local currency)	Amount of rebate (local currency)	CP due (part or MWh)	Rebate
P1 Rebars	0.000	0.00	0.00	0.00
P2 Wire Rods	0.094	0.00	0.00	0.00
P3 Sheet Piles & Heavy sections	0.123	0.00	0.00	0.00
P4 DRI	0.632	0.00	0.00	0.00
P5 Billets & Beam blanks	0.162	0.00	0.00	0.00
P6				

Total consumption within installation:

(b) Consumed in "production processes" within the installation:

Rebars	Unit	Amounts
Wire Rods		
Sheet Piles & Heavy sections		
DRI		
Billets & Beam blanks		

HR Policy SOP & KPIS

Environment and Social Audits

SLL Assurance

HR Policy

A EYE Aluminum

January 16, 2024

Prepared by : ESG

https://www.esgweise.com/

Colophon

Master	Devika Singh (ESGweise)
Reviewed - 1	Sunil Agarwal(ESGweise)
Approved	Mohammed Zaid Saad Amrutha Anandhi (A EYE)

SOP and KPI

A EYE Aluminum

January 16, 2024

Prepared by : ESGweise

https://www.esgweise.com/

Contents

1. Introduction

Illustrative



Business Conduct

Accommodation-EHS

At the time of audit Eye Aluminum has 8 workers in its workforce.

File

Home

Formulas

Data

Review

View

Automate

Developer

Help

Acrobat

Clipboard

Font

Paragraph

Alignment

Number

Styles

Cell Styles

Conditional Formatting

Insert

Delete

Format

Cells

Editing

Add-ins

Comments

Share

Provide details on how the raw material is sourced and from where?

Worker Welfare Audit Criteria: Management systems

Business Conduct

Accommodation-EHS

At the time of audit Eye Aluminum has 8 workers in its workforce.

Illustrative

Responsibilities of the Engaging Party

Engaging Party has acknowledged that the agreed-upon procedures are appropriate for the purpose of the engagement.

Engaging Party is responsible for the Subject Matter on which the agreed-upon procedures are performed. The agreed-upon procedures are solely the responsibility of the Acknowledging Parties.

Statement for ESG Weise , Abu Dhabi

XXXX has prepared its GHG data in accordance with the requirements of

Reporting Criteria

GHG Protocol: A Corporate Accounting and Reporting Standard, 2015, and calculated GHG emission intensity from the GHG emission and production data of crude steel.

ESG WEISE has carried out independent verification of XXX's GHG inventory in accordance with the requirements outlined in ISO 14064-3:2019 and the relevant sections of version 6.0. This verification provides a limited level of assurance of XXX's GHG data in accordance with the principles of Relevance, Completeness, Consistency, Transparency, and Accuracy. The threshold for errors and omissions.

Verification Objective

The objective of this verification is, to assess compliance with the above-mentioned requirements of XXX's GHG Inventory and derived emission intensity contained in the "GHG 23_v2" for the period 1st January 2023 to 31st December 2023 (Year).

Conclusion

Based on the verification process and scope of work agreed upon, nothing has come to our attention to believe that the GHG emissions and emission intensity (calculated based on GHG emissions, crude steel production, and calculated GHG emission intensity from the GHG emission and production data of crude steel).

Question Set

Question Set	Compliant with best practice	Compliant	Partially-compliant	Non-compliant	Non-compliant with one or more major failures identified	Not applicable	Result/outcome per section
Business Conduct	0	5	1	13	0	18	Non-compliant
Quality Management	0	7	0	83	0	4	Non-compliant
Technical	3	1	2	1	0	0	Non-compliant
Recruitment & Employment	0	5	9	20	12	3	Non-compliant with one or more major failures identified
Accommodation-EHS and Security	1	5	2	10	8	0	Non-compliant
Accommodation Provisions	0	4	3	6	2	0	Non-compliant
Nutrition & Food Safety	0	14	1	1	0	7	Non-compliant
Plant-HS	0	1	2	10	6	7	Non-compliant with one or more major failures identified
Environment	0	3	7	9	4	21	Non-compliant with one or more major failures identified
Total	4	45	27	153	22	70	compliant with one or more major failures identified

Page 1

Illustrative

ESG Reports

GHG Audits

GHG Inventory



NA/NAICS Code	CarbonScope Category	CarbonScope/USEIO Good & Service Name	Distribution Channel	Purchase Price (2019 US dollars, excluding credits/local taxes)
330201	Building, Computers & Communications	Computer-aided building, repair and maintenance	Direct from producer or any service	\$2,000,000
330900	Building, Computers & Communications	Computerization and energy cables and cable	Direct from producer or any service	
334296	Electronics, Computers & Communications	Communications equipment	Direct from producer or any service	
334212	Electronics, Computers & Communications	Computer storage device readers	Direct from producer or any service	
334114	Electronics, Computers & Communications	Computer terminals and other computer peripheral equipment	Direct from producer or any service	
334100	Electronics, Computers & Communications	Computer equipment	Direct from producer or any service	\$25,000,000
382000	Electronics, Computers & Communications	Data processing and hosting	Direct from producer or any service	
341414	Electronics, Computers & Communications	Electronic capacitors, resistors, coils, transformers, connectors	Direct from producer or any service	
311100	Fibers & Fabrics	Fabric and textile	Direct from producer or any service	
311100	Fibers & Fabrics	Fiber, yarn, and thread	Direct from producer or any service	
312300	Fibers & Fabrics	Finished and coated fabric	Wholesale	\$25,000,000
316000	Fibers & Fabrics	Fabric and textile	Direct from producer or any service	
316900	Fibers & Fabrics	Other textiles	Direct from producer or any service	
325240	Fibers & Fabrics	Synthetic chemical and artificial and synthetic fibers	Direct from producer or any service	\$18,000,000
311900	Food Commodities	All other foods	Direct from producer or any service	
122600	Food Commodities	Animal farms and aquaculture ponds (except cattle and poultry)	Direct from producer or any service	
311900	Food Commodities	Animal farms and other raised foods	Direct from producer or any service	

Select view: View by categories Units: Carbon in Kg CO2e; Energy in MJ; Water in L.

Category	Carbon	Energy	Water
Energy use (fuel, electricity)	110821	17970	
Direct emissions/sequestration	0		
Inflows (materials, goods, services)		33	1.239623E+07
Transport		3789565	44241.78
Waste disposal	3883.46	14863.96	29880
Total	527328.4	9082231	

Inflows (materials, goods, services)			Outflows (waste, emissions, energy)		
Transport	3789565	4424178	1239623E+07		
Waste disposal	3883.46	14863.96	29880		
Total	527328.4	9082231			

Illustration

Corporate Greenhouse Gas Inventory Project Dashboard

[Return to Manage Projects](#) [View Results](#) [View Charts](#) [Download Profile](#)

Select and save a unit system for input data, material outflows, material storage, waste disposals, prod.

Corporate Inventory Template Example

Corporate GHG Inventory

International (SI) units

97255
 927335.36
 902531.80
 12470363.00

US units

International (SI) units

Company

Carbon Dioxide

Add Storage

Add Disposal

Add Compliance Item

Add

Save

Save

Save

Save

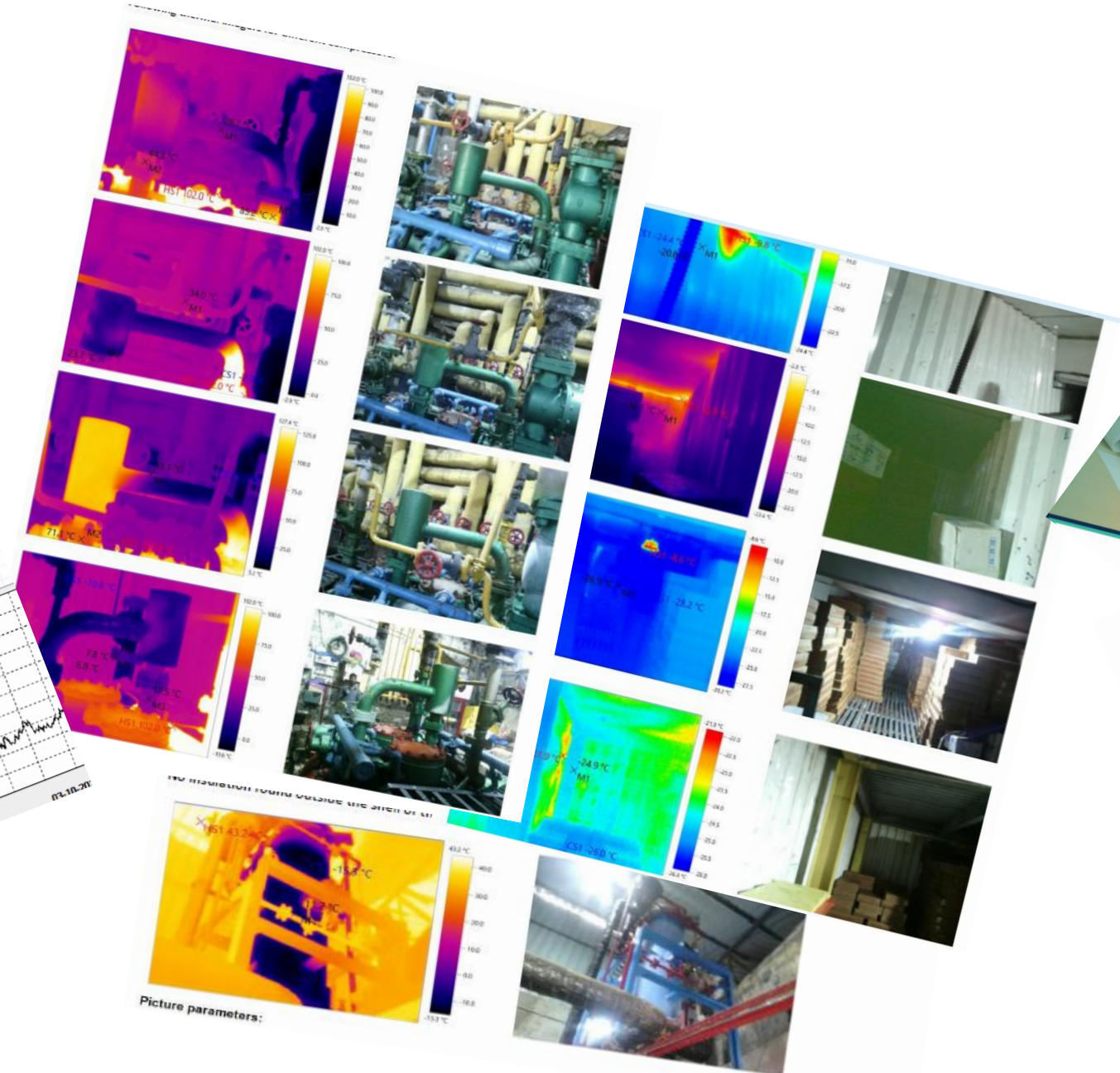
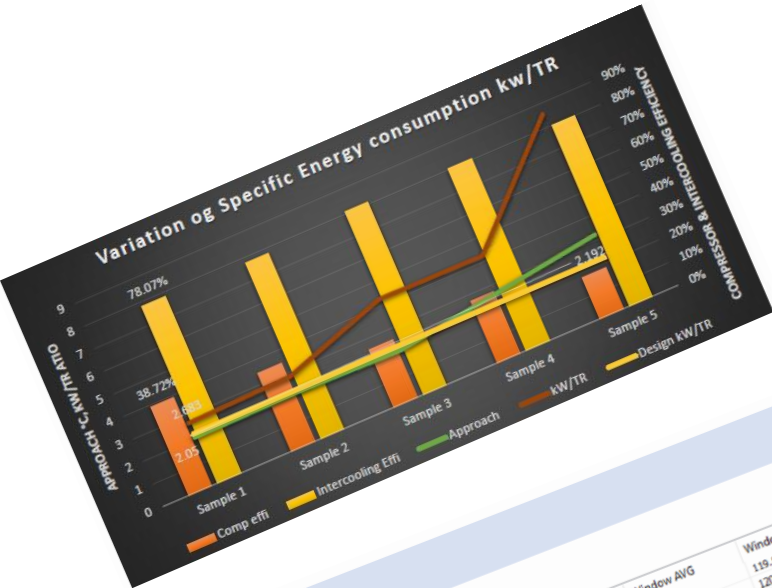
Save

Save

Energy Audits

Thermal Imaging

Leadership



BUSINESS ANALYTICS
FOR LEADERS

BUSINESS PROCESS MODELLING
FOR LEADERS

ESGwise

(+971) 58 828 5373

Sumit@esgwise.com

Major Team Credentials





At ESGWEISE, professional training is more than a service — it's our passion for building Human Resource Excellence



(+971) 58 828 5373



Sumit@esgweise.com